

If you have any questions please ask us:

To book your place on a session contact

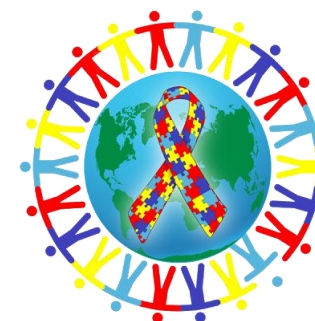
ASD Pathway Co-ordinator – Dawn High
01553 668606

You can receive help with queries about NHS services from
Patient Advice and Liaison Service
Telephone: 0800 088 4449
Email: pals@nchc.nhs.uk
(Monday-Friday 9am-5pm)



We would like to invite you to a
Post Diagnosis Follow up Workshop

This workshop is an
information session for
parents/carers
who have children with a recent
diagnosis of
Autism Spectrum Disorder.



What the work shop provides:

- ✓ An opportunity to find out more about your child's diagnosis
- ✓ More understanding around the process of assessments and decision making that was made to diagnose your child
- ✓ A chance to meet parents of children with similar needs as your child
- ✓ Opportunity to share your experiences
- ✓ Ask any further questions you may have



About the workshop:

- ✓ This session last approximately two hours long.
- ✓ It will be group based with other parents
- ✓ We will explore information about your child's needs
- ✓ What to expect in the future
- ✓ Opportunity to read through and take away helpful resources



Please note: this is not suitable for children to attend